



## SPECIFICATION SHEET

# The Nurtured By Nature Collection: Hive

Derived from the regular geometry of the Honeycomb, Hive is an etched texture with a naturally-inconsistent, organic and irregular pattern. Recommended for furniture, wall panels, door panels and headboards.

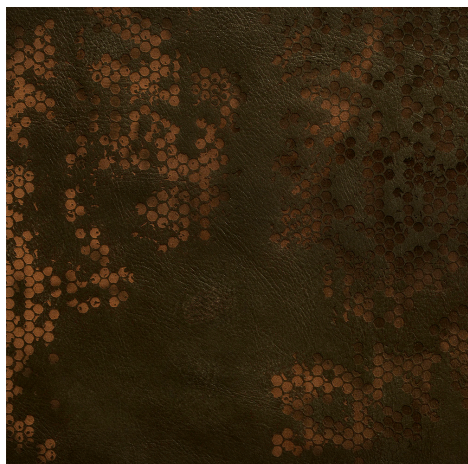


LEATHER

800.342.7738

[garrettleather.com](http://garrettleather.com)

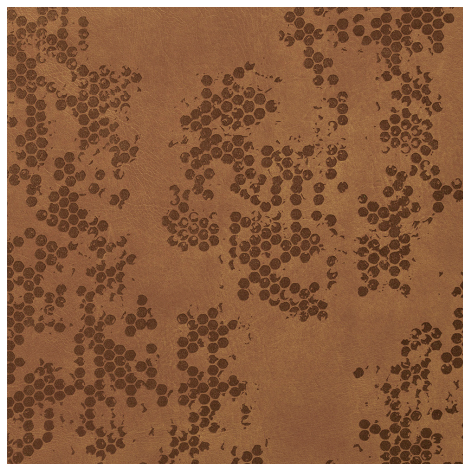




**NNHIVE050** Hive Blackfoot



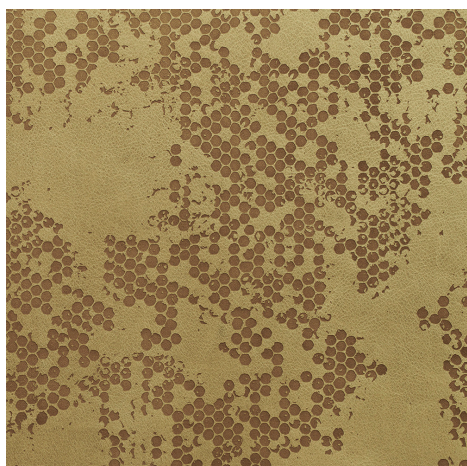
**NNHIVE027** Hive Apache



**NNHIVE084** Hive Mohican



**NNHIVE9001** Hive Irish Cream



**NNHIVE9075** Hive Fennel



**NNHIVE9052** Hive Anthracite

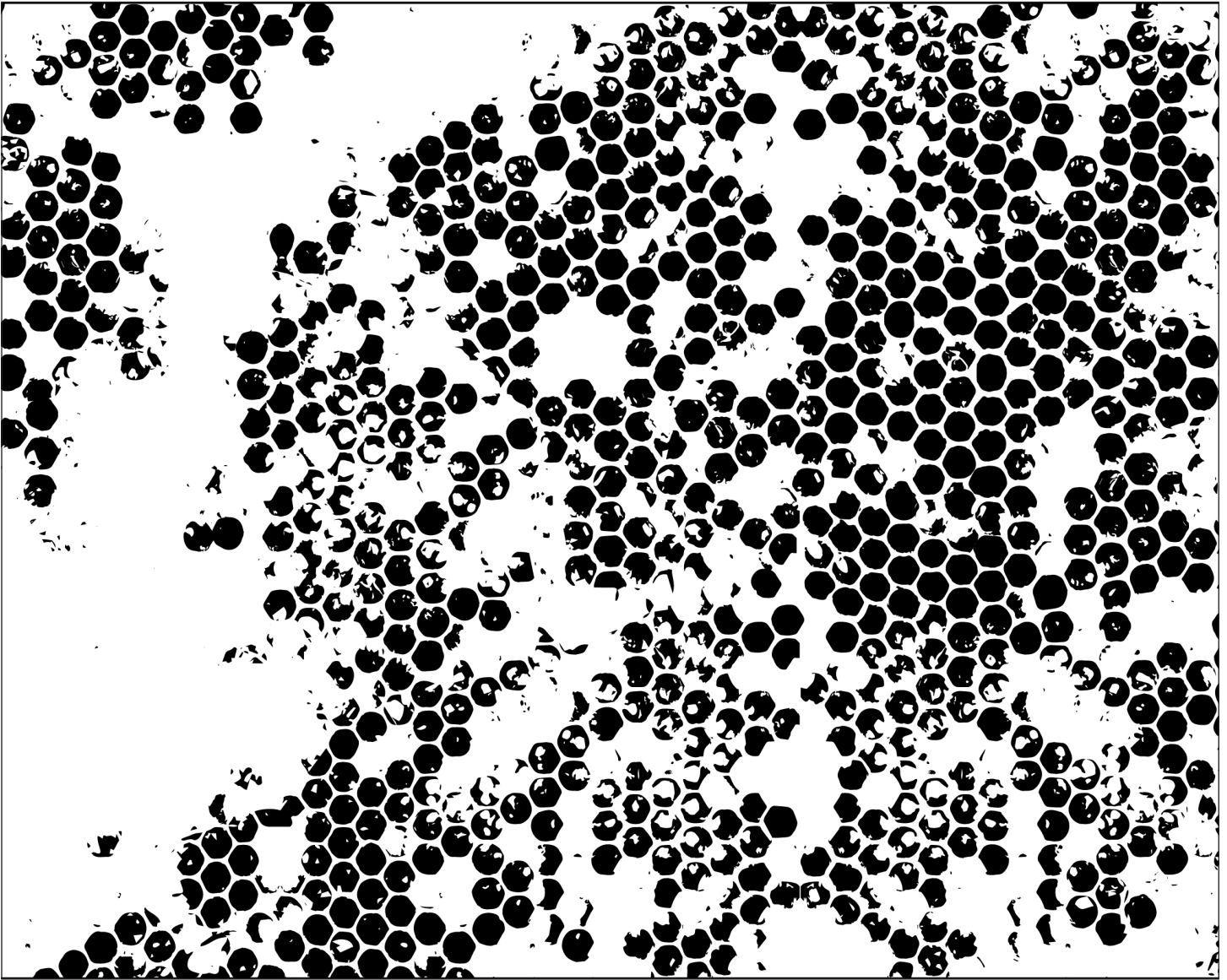
## SPECIFICATION SHEET

# Hive Colorways

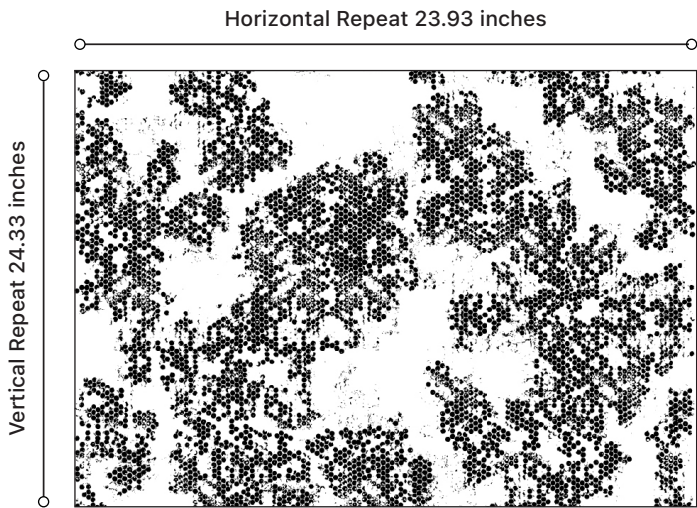
Etched patterns are created on half hides using precision lasers. As a product of nature, each hide will vary in size and shape. Etched hide sizes range between 20 and 25 square feet (1.86 to 2.32 square meters) on average. Center cut hides size 50 inches x 70 inches (1270 mm x 1778 mm) are available for large applications. Lead time is 4 to 6 weeks.

Additional leather colors are available upon request.

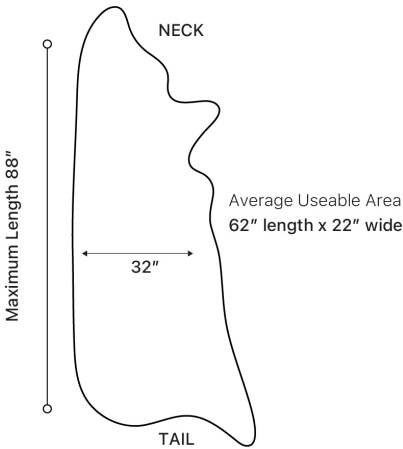




Hive pattern at 100% of actual size.



Hive repeat. Not shown to scale.



GARRETT  
LEATHER

800.342.7738  
garrettleather.com

# DISTRESSED LEATHER SPECIFICATION

## DESCRIPTION

Italian natural grain, pure aniline leather.

## ATTRIBUTES

Light wax finish provides moisture resistance and anti-bacterial protection.  
Unique variations and natural markings.

## Average Hide Size

25.00 sq ft

## THICKNESS

1.1 mm +/- 0.1 mm

## WEIGHT

2.75 oz. +/- 0.25 oz per sq ft

## GRAIN CHARACTERISTICS

Natural variations

## FINISH CHARACTERISTICS

Light wax

## ABRASION

CS-10 Taber Abrasion Resistance:  
3600 cycles

ASTM D-4157 Wyzenbeek Abrasion Resistance:  
Class 4.5 at 75,000 cycles  
Class 4 at 100,000 cycles

## ANTIBACTERIAL

AATCC 100  
Assessment of Anti-Bacterial Finishes on Textile Materials (Quantitative):  
Meets Requirements

AATCC 147

Assessment of Anti-Bacterial Activity of Textile Materials (Qualitative):  
Meets Requirements

## ENVIRONMENTAL

GREENGUARD Gold Indoor Air Quality:  
Certified

## FLAMMABILITY

California Technical Bulletin 117 2013 Section E Flammability Test:  
Certified

FAR 25.853 (a) Am. 25-116, App. F, Part I (a)(1)(ii) Federal Aviation Regulation for Flammability Resistance:  
Passes with flame treatment

MVSS 302

Federal Motor Vehicle Safety Standards Flammability of Interior Materials:  
Certified

IMO Part 8: Upholstered Furniture International Marine Organization 3.1 Cigarette Ignition:  
Passed

IMO Part 8: Upholstered Furniture International Marine Organization 3.2 Propane Flame:  
Passed

ASTM E84 Surface Burning Characteristics of Building Materials:  
Class A

NFPA 260 National Fire Protection Association Cigarette Ignition Resistance:  
Certified

BS 5852:2006:Source 5 British Standard Flammability Test:  
Certified

## LIGHTFASTNESS

AATCC 16.3 Opt 3:  
Class 3 at 72 hours

*Distressed may be used in California TB 133 applications with suitable fire backers.*

## DURABILITY

Recommended for all upholstery applications. Signs of wear will be evident.  
Ages beautifully with a rich patina developing overtime.

# NATIVE LEATHER SPECIFICATION

## DESCRIPTION

Italian hand-buffed natural grain, pure aniline leather.

## ATTRIBUTES

Rugged texture with mottled appearance and beautiful depth of color.  
Unique variations and natural markings.

## Average Hide Size

25.00 sq ft

## THICKNESS

1.3 mm +/- 0.1 mm

## WEIGHT

3.25 oz. +/- 0.25 oz per sq ft

## GRAIN CHARACTERISTICS

Hand-buffed

## FINISH CHARACTERISTICS

Naked

## ENVIRONMENTAL

GREENGUARD Gold Indoor Air Quality:  
Certified

## FLAMMABILITY

California Technical Bulletin 117 2013 Section E Flammability Test:  
Certified

FAR 25.853 (a) Am. 25-116, App. F, Part I (a)(1)(ii) Federal Aviation Regulation for Flammability Resistance:  
Passes with flame treatment

IMO Part 8: Upholstered Furniture International Marine Organization 3.1 Cigarette Ignition:  
Passed

NFPA 260 National Fire Protection Association Cigarette Ignition Resistance:  
Certified

BS 5852:2006:Source 5 British Standard Flammability Test  
Certified

ASTM E84 Surface Burning Characteristics of Building Materials  
Class A

*Native may be used in California TB 133 applications with suitable fire backers.*

## DURABILITY

Recommended for all upholstery applications. Signs of wear will be evident.  
Ages beautifully with a rich patina developing overtime.

## DISTRESSED AND NATIVE LEATHER



PRODUCT CERTIFIED  
FOR LOW CHEMICAL  
EMISSIONS:  
UL.COM/CGG  
UL 2818



## DISTRESSED LEATHER



Antibacterial



800.342.7738

garrettleather.com