



SPECIFICATION SHEET

The Nurtured By Nature Collection: Honeycomb

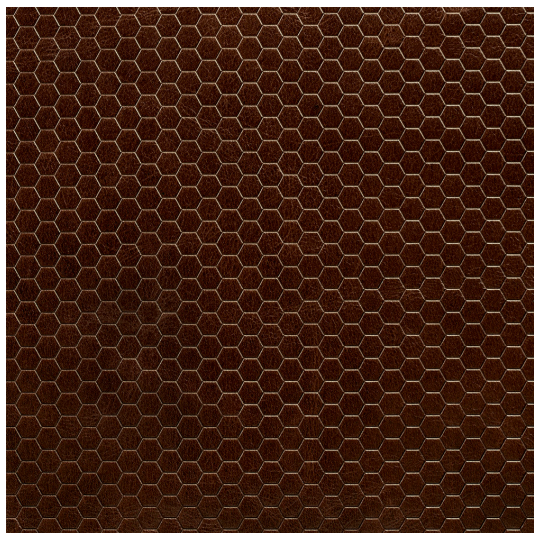
Nature's original maker space — Honeycomb is a geometric powerhouse enhanced through the depth of a consistent embossed pattern. Recommended for furniture, wall panels, door panels and headboards.



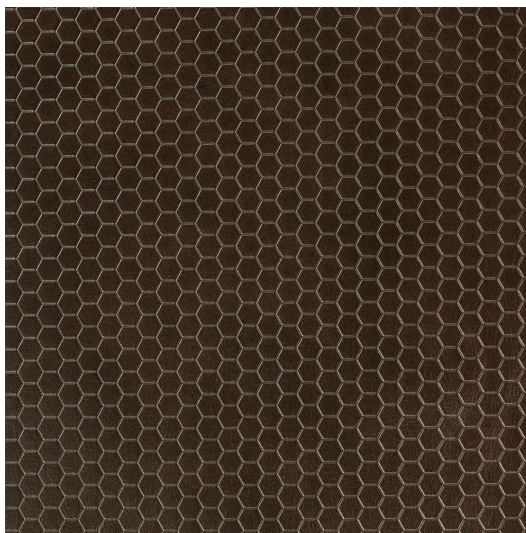
LEATHER

800.342.7738

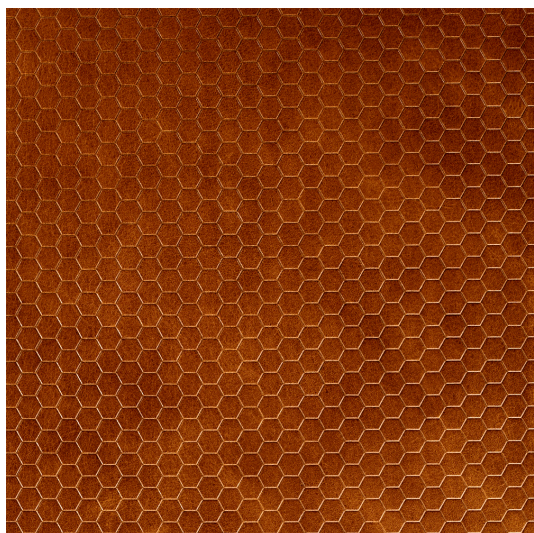
garrettleather.com



NNHON2626 Honeycomb Footpath



NNHON2630 Honeycomb Hollow



NNHON2612 Honeycomb Scenic Trail

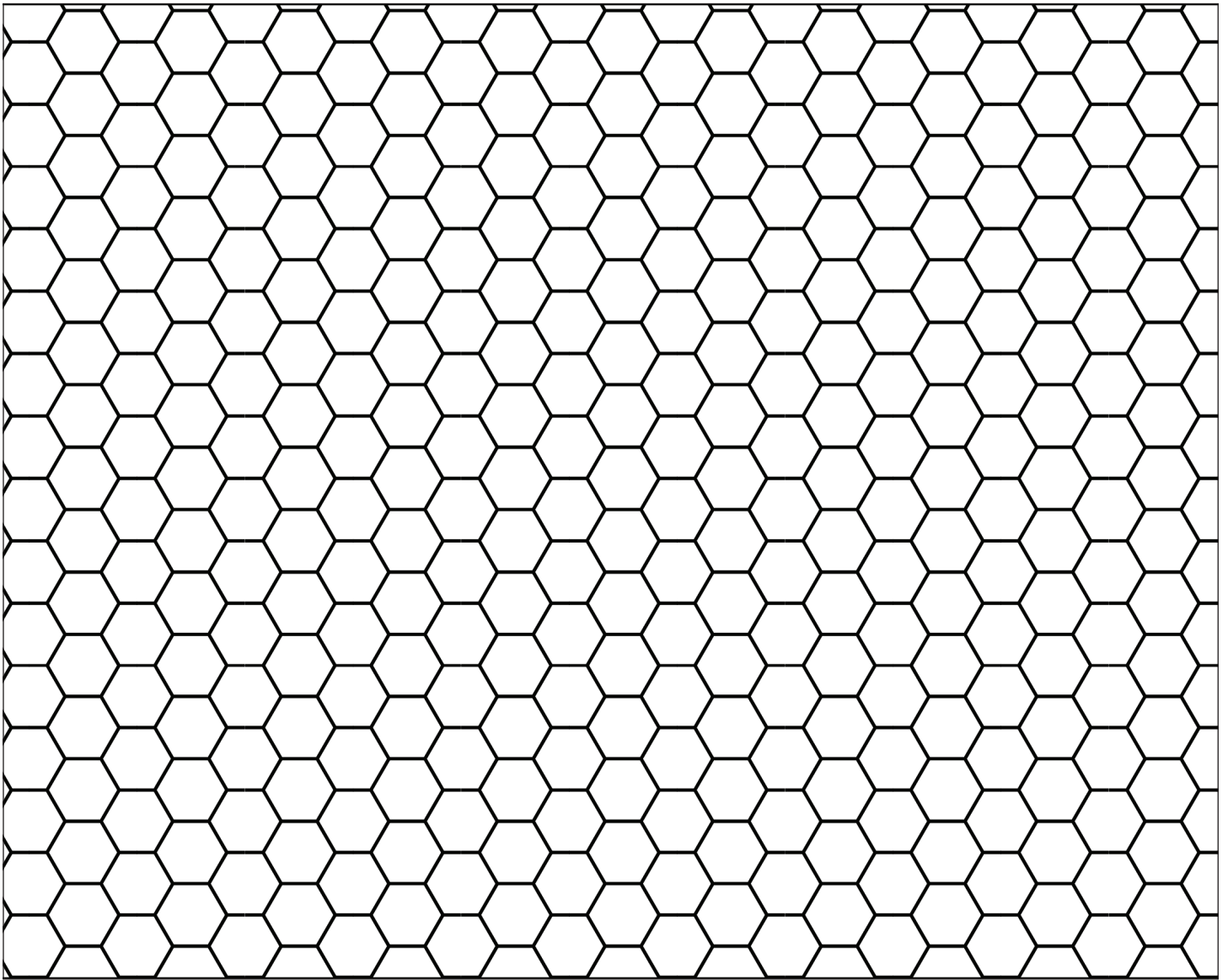
Embossed Honeycomb on full grain leathers with soft finishes will age to perfection like stones or wood worn by rushing waters.

SPECIFICATION SHEET

Honeycomb Colorways

Honeycomb is embossed on half hides using a combination of heat and pressure. As a product of nature, each hide is unique. Hide size and shape will vary and color may darken during embossing. Hide sizes range between 20 and 25 square feet (1270 mm and 1778 mm) on average. Lead time is 2 weeks.

Additional leather colors are available upon request.



Honeycomb pattern at 100% of actual size. Individual hexagons are .375 inches x .375 inches.

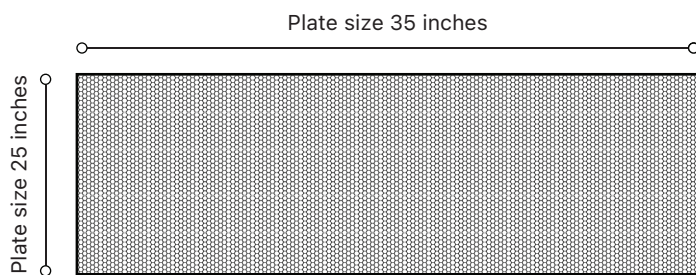
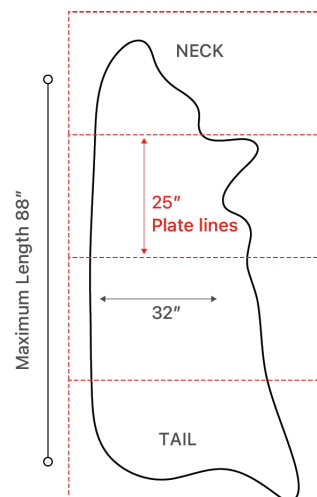


Plate size 25 inches by 53 inches. Not shown to scale.



JOURNEY LEATHER SPECIFICATION

DESCRIPTION

Italian natural grain, pure aniline, pull-up leather.

ATTRIBUTES

High gloss, transparent wax finish. Color will migrate when leather is pulled or stretched. Unique variations and natural markings will appear throughout each hide.

Average Hide Size

25.00 sq ft

THICKNESS

1.1 mm +/- 0.1 mm

WEIGHT

3.00 oz. +/- 0.25 oz per sq ft

GRAIN CHARACTERISTICS

Smooth

FINISH CHARACTERISTICS

High gloss, transparent wax finish

ANTIBACTERIAL

AATCC 100

Assessment of Antibacterial Finishes on Textile Materials (Quantitative):
Meets Requirements

AATCC 147

Assessment of Antibacterial Activity of Textile Materials (Qualitative):
Meets Requirements

ENVIRONMENTAL

GREENGUARD Gold Indoor Air Quality:
Certified

FLAMMABILITY

California Technical Bulletin 117 2013 Section E Flammability Test:
Certified

FAR 25.853 (a) Am. 25-116, App. F, Part I (a)(1)(ii) Federal Aviation Regulation
for Flammability Resistance:
Passes with flame treatment

MVSS 302

Federal Motor Vehicle Safety Standards Flammability of Interior Materials:
Certified

IMO Part 8: Upholstered Furniture International Marine Organization 3.1 Cigarette Ignition:
Passed

IMO Part 8: Upholstered Furniture International Marine Organization 3.2 Propane Flame:
Passed

ASTM E84 Surface Burning Characteristics of Building Materials:
Class B

NFPA 260 National Fire Protection Association Cigarette Ignition Resistance:
Certified

BS 5852:2006:Source 5 British Standard Flammability Test:
Certified

DURABILITY

Recommended for moderate to low traffic areas. Signs of wear will be evident.
Ages beautifully with a rich patina.



PRODUCT CERTIFIED
FOR LOW CHEMICAL
EMISSIONS:
UL.COM/MGG
UL 2818



DISTRESSED LEATHER



800.342.7738

garrettleather.com