



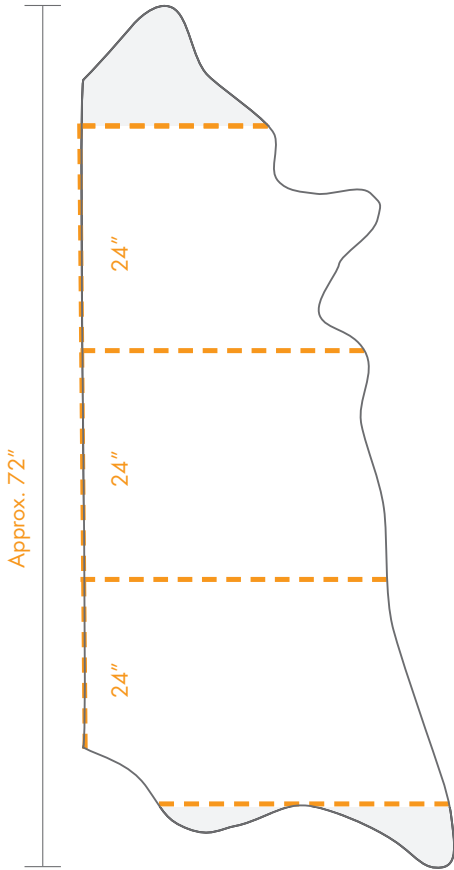
The photographs in this brochure show each pattern at 100% scale, or actual size. While every effort was taken to show true color representation, actual leather samples are available upon request. Please keep in mind that these are to show pattern only. You may specify the color of your choice for each pattern.

Garrett Leather's Impress is produced using a combination of heat and pressure to emboss specific patterns on leather. When specifying Garrett Impress, there are a number of items to keep in mind:

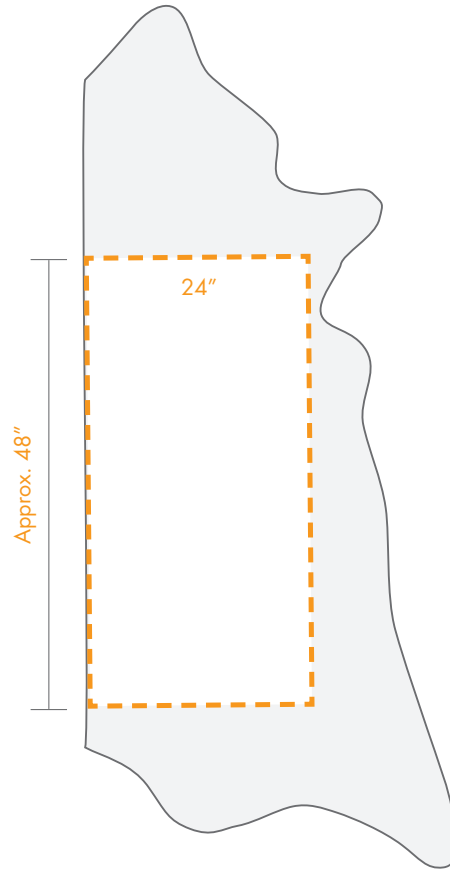
- Any pattern of Garrett Impress may be embossed on any color of the following products: Avion (65 colors), Caressa (60 colors), Chatham (75 colors), Distressed (18 colors), Flight (20 colors), Glazed (10 colors), Luxianna (10 colors), Native (8 colors), Newport Club (10 colors), Pearlescence (21 colors), Sierra (21 colors), Vintage (8 colors).
- A 10" x 10" sample of a specific Garrett Impress pattern on a specified color of Garrett leather is available for a small fee. The fee is reimbursable upon placement of an order. Please allow two (2) weeks for all special sample requests.
- All Impress patterns are available in ½ hide increments only.
- Embossing plates are laid down the length of the ½ hide as 24" high and 40-54" wide (depending on specific plate size.) There may be some plating marks and/or small overlapping areas of the pattern due to the nature of plate embossing. There will be a slight seam every 24" down the length of the hide. Plate sizes and pattern repeats for each pattern are listed on page 37. Diagrams of plate layout options appear on page 38.
- Lead-time for all Impress orders is two (2) weeks from receipt of confirming purchase order and applicable deposit.

If you have any questions regarding Garrett's Impress, please contact your customer service representative directly at 800-342-7738.

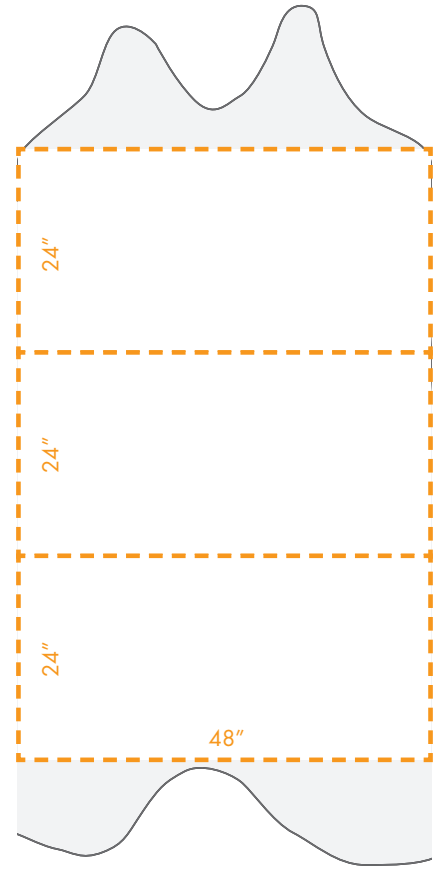
Pattern	Plate Size (in inches)	Vertical Repeat	Horizontal Repeat
Alligator	24 x 48	4 9/16"	6"
Anaconda	24 x 48	2 1/2"	3 1/2"
Asian Ostrich	24 x 48	11 1/8"	5"
Baby Ostrich	24 x 48	9"	9 1/4"
Bark	24 x 48	6"	11"
Bases	24 x 52	2 1/2"	3 1/2"
Basket	24 x 54	1/2"	1/8"
Boxboard	24 x 54	n/a	n/a
Braid	24 x 52	1/8"	5/8"
Chevron Weave	24 x 54	7/8"	3/4"
Diamond	24 x 48	2"	1"
Dinosaur	24 x 48	5 1/2"	9"
Dreamcatcher	23 x 39	3 1/2"	3 1/2"
Florida Gator	24 x 48	7"	12"
Flower Garden	24 x 48	9 1/2"	7 3/8"
Football	24 x 48	2 7/8"	11"
Herringbone	24 x 48	1/4"	3/16"
Jumbo Croc	24 x 48	24"	8 1/2"
Lace	26 x 54	6 3/4"	7"
Large Diamonds	24 x 54	2"	3"
Large Weave	24 x 54	3/8"	1/2"
Lizard	24 x 48	4 1/8"	2 3/4"
Micro Woven	30 x 52	1/8"	1/8"
Ostrich	24 x 48	4 1/4"	8 1/2"
Paisley	24 x 40	4 1/2"	6"
Python	24 x 48	12 1/4"	5 1/2"
Rattan	24 x 52	1 3/4"	1 7/8"
Saddle	24 x 54	3 1/4"	6"
Sand Dune	24 x 52	10 1/2"	7"
Scotch Grain	24 x 48	n/a	n/a
Small Weave	24 x 54	1/8"	1/8"
Teardrop	24 x 52	1/4"	1/4"
Waterfall	24 x 50	n/a	n/a
Western Tool	24 x 48	6 1/4"	13 1/8"



Option 1: Garrett's standard option. Embossing plates placed horizontally.



Option 2: Allows for change in the direction of the pattern on the hide. This option will result in a lower cutting yield.



Option 3: Offers a higher cutting yield than options 1 and 2. However, the Impress patterns will not reach the edge of whole hide. Customer is responsible for purchasing the entire hide. The hide will be trimmed prior to embossing. Scrap leather may be sent to customer upon request.

Please note: Plate sizes vary. Some pattern plates are up to 54" wide.